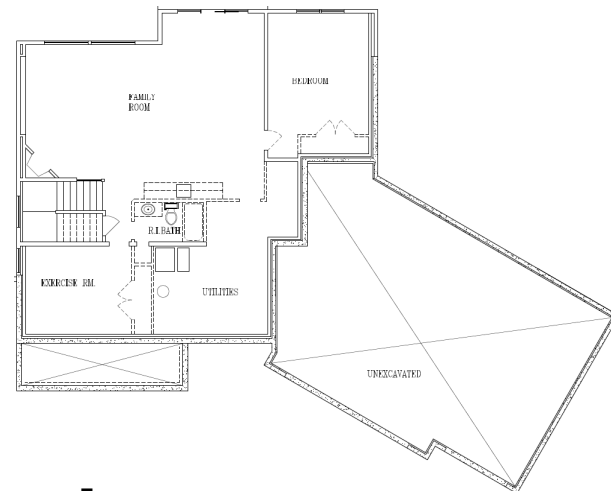
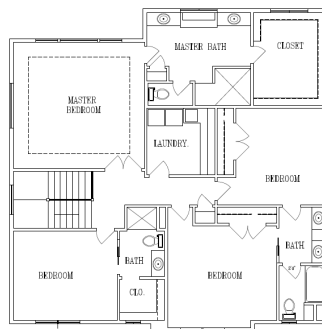




RyMARK

FIELDSTONE 6TH SUBDIVISION

CONEFLOWER LN SW ROCHESTER, MN 55902



Almost 2 acres of amazing wooded privacy on the end of a cul-de-sac in a brand new and exciting subdivision. Angled garage and front porch supply supreme curb appeal. Open main floor footprint with flexible room off of the kitchen with endless opportunities. Amazing private master suite with junior ensuite and jack and jill bed/bath scenario.

Bedrooms: 5
Bathrooms: 5
Main Floor: 1574
Upper Floor: 1762
Lower Floor: 1574
Total Square Feet: 4910
Angled Garage: Yes - Oversize 3 car



RAMI HANSEN | Builder Representative

Rami Hansen answers any questions regarding upcoming models, lot availability and pricing, scheduling builder meetings and general development information.

M | (507) 316.3355

O | (507) 281.9800

E | RamiHansen@EdinaRealty.com

Edina Realty

RYAN RUSKELL & MARK HANSON | Builders

O | (507) 281.9800

E | RyMarkHomes@gmail.com

For more info, please visit:

WWW.RYMARKHOMES.COM